

Seismic Bolt Down Kit. Assembly Instructions.

Tools needed:

- Drill + Phillips drill bit,
- No.4 'T' Bar,
- No. 2.5 'T' Bar,

THE KITS CONTAIN THE POD SAFETY BRACKETS BUT NO ANCHOR FIXINGS,
THIS IS FOR SITE CONTRACTOR TO SUPPLY AND 'BOLT DOWN' THE POD

Revision 4 – 01/02/2017

Note: Please read this guide BEFORE assembling.

1. Hoop Safety Bracket (AIR-826-00)

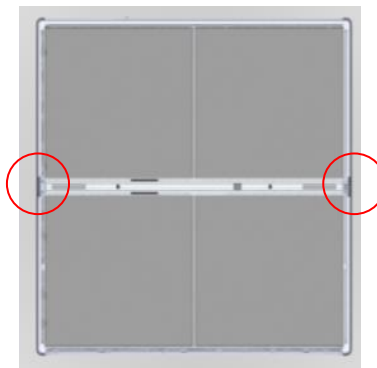
When: Once the hoop has been positioned and aligned correctly the hoop safety bracket can be mounted and then secured into the floor.

Why: As the hoop is the starting structure of the entire frame, it is crucial it remains in place.

NB: Floor anchor fixings to be supplied by site contractor.



Place the bracket into the hoop upright in the position as shown with the rear face flat against the back and the bottom face flat against the floor cover. Fix it with 6 M4x8 screws. (SYS-FIX-042)

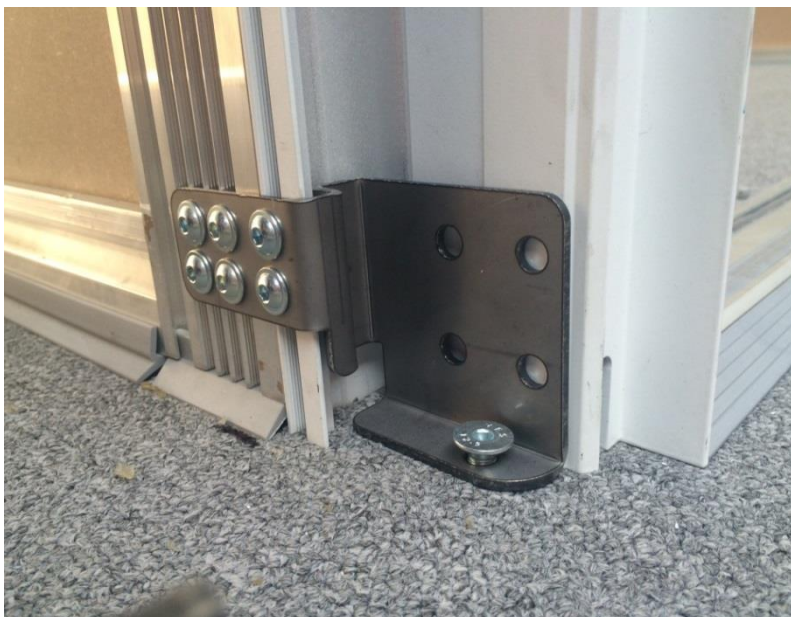


2. Straight Pod Floor Level Safety Bracket (AIR-827-01/02)

When: Once the Screens and Front/ Rear Assemblies have been built and aligned correctly the corner brackets can be fixed and anchored to stop any floor level movement.

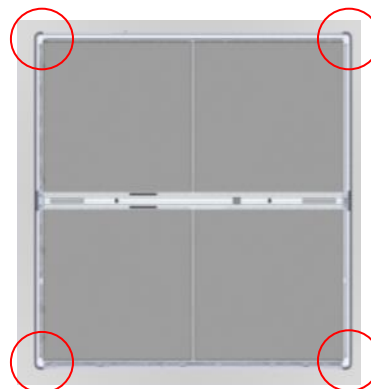
Why: These corner brackets are needed to stop any movement of the front/rear assemblies which is crucial to protect the glass.

NB: Floor anchor fixings to be supplied by site contractor.



2 x AIR-827-01 LH & 2 X AIR-827-02 RH.

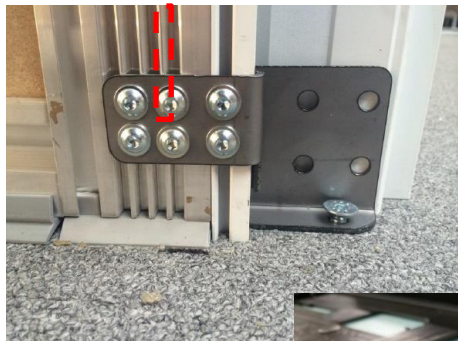
Push the brackets onto the corner extrusions and fix using the M6x8 (SYS-FIX-066) screws in the positions shown.



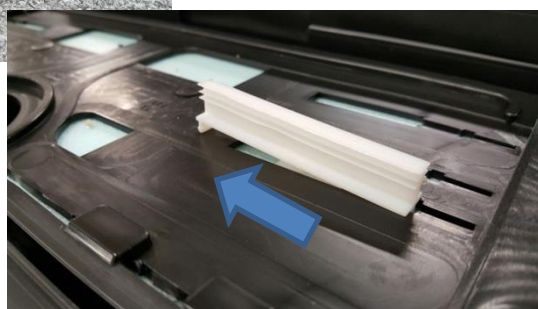
3. Modification To Bottom Panel Clips (AIR-337-00)

When: After fitting the floor level safety brackets the bottom corner panel clips need to be trimmed.

Why: Floor level safety brackets occupy the same position as the four bottom corner panel clips so needs to be trimmed to allow fitting.



Slide out the bottom panel clip that would occupy the same position as the safety bracket & trim back half way then slide back into the upholstery panel.



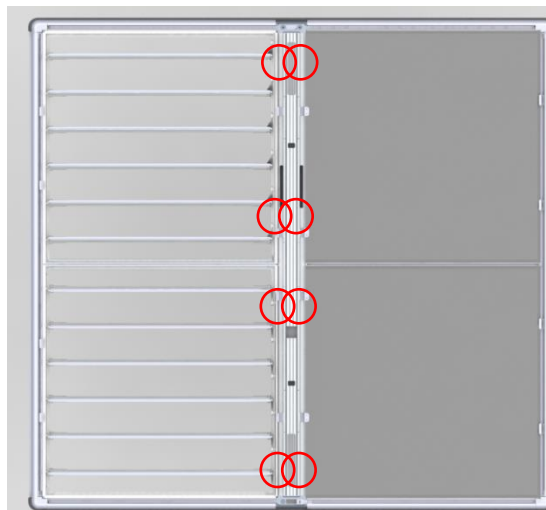
4. Roof Safety Bracket (AIR-829-00 & AIRO-307-00)

When: Once the roof panels have been mounted and set up so the blades run smoothly, the hoop side safety brackets can be fixed into positions.

Why: To hold the roof panels down/ stop any movement.



8 per pod as shown in the locations below Place the brackets into position on the hoop and fix down using the self drilling screws provided. (SYS-FIX-091)



5. Top Track Glass Safety Stop (AIR-832-00)

When: During the assembly of the front and rear frames.

Why: The top and bottom glass stops secure the glass panels in place and will stop and lateral movement



Before the top track is assembled into the frame, slide the part into the channel as shown.

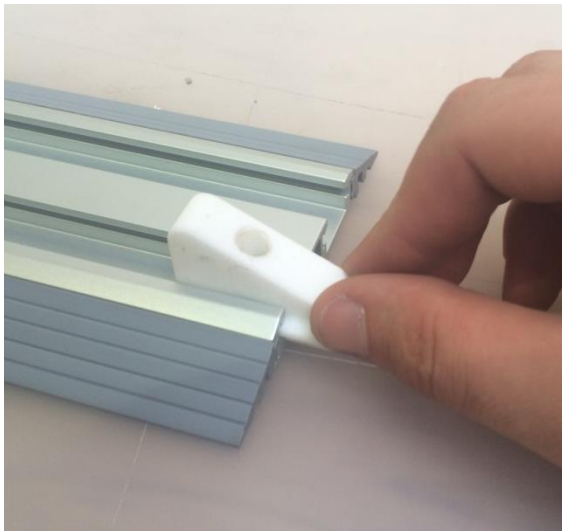
Once the glass has been installed push the block up against the glass and tighten the grub screw inside. (SYS-FIX-025)



6. Bottom Track Glass Safety Stop (AIR-833-00)

When: During the assembly of the front and rear frames.

Why: The top and bottom glass stops secure the glass panels in place and will stop and lateral movement



Before the bottom track is assembled into the frame, slide the part into the inside channel.

Once the glass has been installed push the block up against the glass and tighten the grub screw inside. (SYS-FIX-025)

